



UNIVERSITY OF THESSALY
SCHOOL OF ENGINEERING
DEPARTMENT OF PLANNING
AND REGIONAL DEVELOPMENT


UNDERGRADUATE STUDIES INFORMATION GUIDE

| 2019 – 2020 |



English
version 

University of Thessaly, School of Engineering
Department of Planning and Regional Development (PRD-UTH)

 School of Engineering Complex, Pedion Areos, 383 34 Volos, GREECE

 (+30) 24210 74452-55 |  <http://www.prd.uth.gr> |  @prd.uth.gr

 (+30) 24210 74380 |  @ g-prd@prd.uth.gr |  @PrdUth


UNIVERSITY OF THESSALY
SCHOOL OF ENGINEERING

DEPARTMENT OF PLANNING
AND REGIONAL DEVELOPMENT

**UNDERGRADUATE STUDIES
INFORMATION GUIDE**

**Volos
September 2020**

University of Thessaly, School of Engineering
Department of Planning and Regional Development (PRD-UTH)

 School of Engineering Complex,
Pedion Areos, 383 34 Volos, GREECE

 (+30) 24210 74452-55

 (+30) 24210 74380

 g-prd@prd.uth.gr

 <http://www.prd.uth.gr>

 [@prd.uth.gr](#)

 [@PrdUth](#)

© PRD-UTH 2020

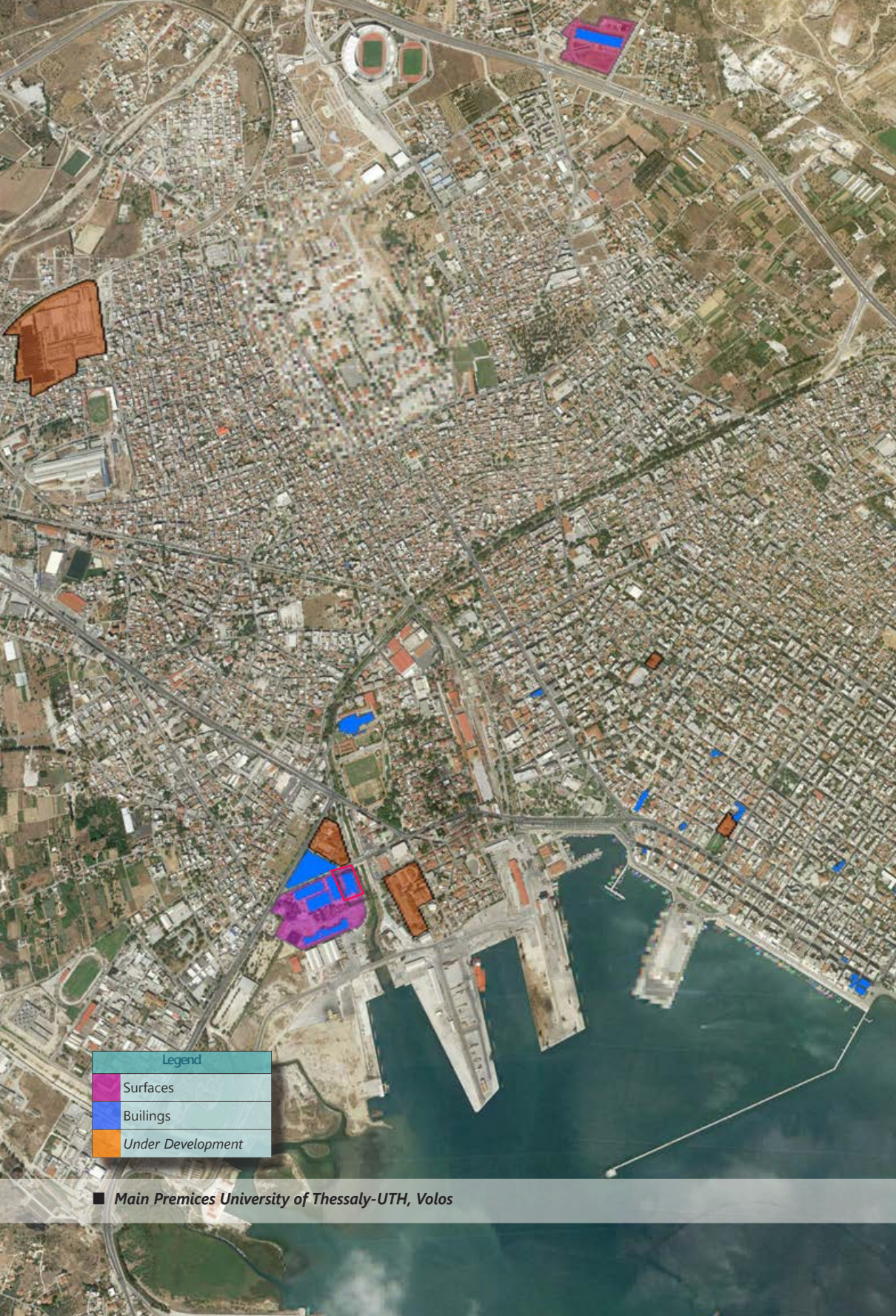
- Edited by: Evangelos Asprogerakas, Katerina Kaisari, Anna Samarina
- Designed by: Panagiotis Pantazis

The guide is available at <http://www.prd.uth.gr>



Contents

1. Welcome to Volos – “The Land of the Argonauts and the Centaurs”	5
2. University of Thessaly	6
3. The Department of Planning and Regional Development and its Location	8
4. The Department in the Local and Academic Community	9
5. Administrative Structure	11
6. Studies – Undergraduate Program	12
7. Postgraduate Program	17
8. Research	18
<i>Research Units</i>	18
<i>Research Centers</i>	23
<i>“Aeichoros” Magazine</i>	23
9. Staff	24



Legend	
Surfaces	■
Buildings	■
Under Development	■

■ Main Premices University of Thessaly-UTH, Volos

1. Welcome to Volos *"The Land of the Argonauts and the Centaurs"*

Volos is a modern, lively, medium-sized city with a population of 120.000 inhabitants. The city is at an approximately equal distance from the country's two main urban centres Athens and Thessaloniki. It is located at the foot of Mt. Pelion, a mountain of exceptional natural beauty. With many well-preserved traditional villages, it is a combination of outstanding landscapes for winter and summer tourism. The refreshing natural environment and culture are of great importance for the development of a fast growing academic community in Volos.

The history of the Volos area goes back to prehistoric times. The first prehistoric human settlements in Europe were found in the neighbouring towns of Dimini and Sesklo. Northeast of the city is the town of Iolkos which is associated with the leg-

ends of the Expedition of the Argonauts and Homer's epics. In this century, Volos has made a name for itself as an industrial and commercial centre in central Greece, with the third largest port in the country.

The economic development meets also a cultural blossoming in a city that succeeded in combining the neo-classic and the modern and faces the future with a serious respect of the past. The great folk painter Theofilos lived and worked in Volos at the end of the 19th century and he was followed by another big artist, Giorgio De Chirico, son of the President of the Thessalian Railways, Evaristo de Chirico, who built the small but famous railway of Pelion Mountain.

In the 1950s, a major earthquake destroyed a large part of Volos including many of the remarkable neo-classical buildings.

Today the Municipality of Volos endeavours to preserve and develop new uses for the few remaining industrial or historic buildings. Some of those buildings now house University facilities.



2. University of Thessaly

University of Thessaly (UTH) was founded in 1984. UTH is a prominent institution of Higher Education aiming to promote scientific knowledge through teaching and research, and to contribute to the cultural and economic development of the local community, and the society at large. It promotes scientific and academic excellence in all fields of expertise and rewards outstanding individual performances, establishing new scientific research units and fostering an environment that supports innovative actions.

Today, University of Thessaly, with 37 Departments and 8 schools, is the third biggest University in Greece, with its own identity and with a prominent position in our national educational system. University of Thessaly provides 105 undergraduate and postgraduate programs, and extra-curricular modules in specific research and business fields. It has more than 42.000 undergraduate students, about 4.300 postgraduate students and about 1500 PhD students. It also has

1000 members of teaching and research staff and 450 members of administrative personnel. It is known for its excellent research performance and outstanding scientific achievements, in accordance with the international standards. The excellent equipped Laboratories of the different Departments and Research Units have a number of well-trained researchers to support them.

As part of its future goals, University of Thessaly intends to strengthen its cooperation's abroad, increase its human resources, upgrade and utilize existing human resources, attract young scientists and encourage research through the creation of modern research structures, increase infrastructure and utilize its assets and funds from the EU with the research programmes Horizon 2020, RFSR, FP6, FP7, Erasmus+, INTERREG, and LIFE. The members of the academic and research staff participate in European research networks and numerous innovative research projects in the EC. Currently, UTH has more than 600 Erasmus Bilateral Agreements with more than 40 different countries, and works in partnership with European and overseas institutions to facilitate aca-



■ *Student Dormitory Development Plan in N. Ionia-Volos (formerly Vamvakourgia)*

demographic exchanges, research collaborations and jointly organized academic programs (intensive courses, summer schools etc.) with other higher education institutions.

■ Schools and Departments

▶ School of Humanities and Social Sciences

Departments of Primary Education, Early Childhood Education, Special Education, History, Archaeology and Social Anthropology, Culture, Creative Media and Industries, Language and Intercultural Studies.

▶ School of Engineering

Department of Architecture Engineering, Civil Engineering, Mechanical Engineering, Planning and Regional Development, Electrical and Computer Engineering.

▶ School of Agricultural Sciences

Departments of Agriculture Crop Production and Rural Environment,

Ichthyology and Aquatic Environment, Agrotechnology, Animal Science, Food Science and Human Nutrition.

▶ School of Health Sciences

Departments of Medicine, Biochemistry and Biotechnology, Nursing, Public and Integrated Health, Physiotherapy, and Veterinary Science.

▶ School of Technology

Departments of Energy Systems, Environmental Sciences, Digital Systems, Forestry, Wood Science and Design.

▶ School of Economics and Business

Departments of Economics, Accounting and Finance, and Business Administration.

▶ School of Physical Education and Sport Science

Departments of Physical Education and Sport Science, Nutrition and Dietetics.

▶ School of Science

Departments of Computer Science and Biomedical Informatics, Computer Science, Physics, and Mathematics.



■ *Seafront view of Papastratou Complex-UTH, Volos*

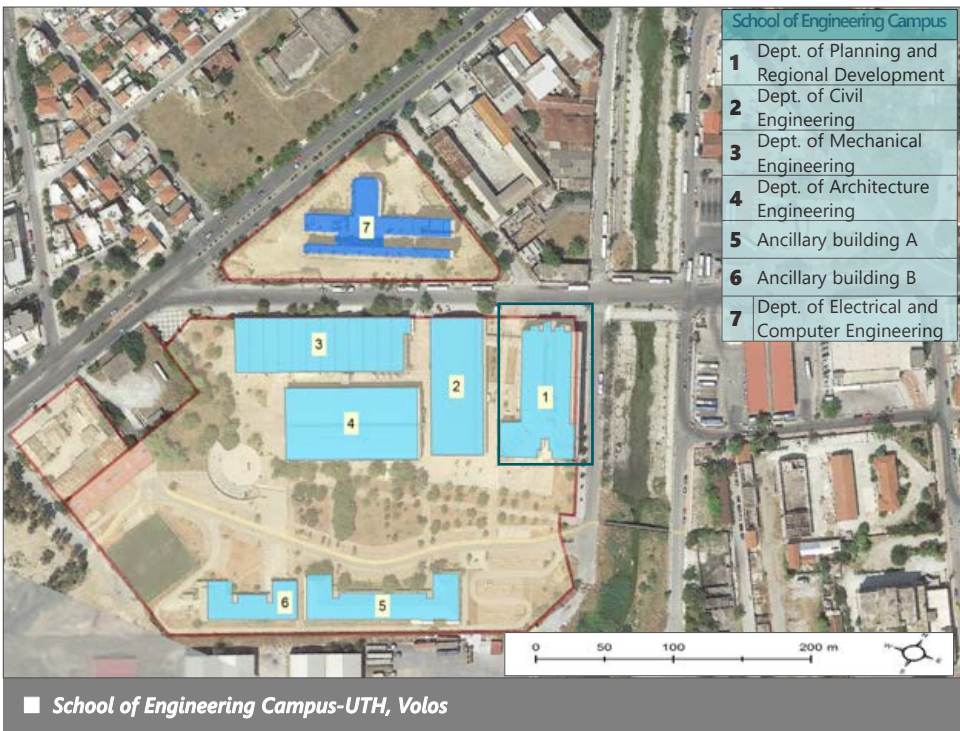
3. The Department of Planning and Regional Development and its Location

The Department of Planning and Regional Development (DPRD), of the School of Engineering, is located near the centre of the city of Volos. The offices, classrooms and laboratory facilities are housed at the "Pedion Areos" campus at the city's southern entrance. The campus incorporates old industrial buildings which have been restored together with new structures. It is a perfect example of a successful return to new use of the city's industrial past. The DPRD's new building is in operation since the beginning of 2000.

Pedion Areos, and the surrounding area, is being reshaped. In addition to the new buildings and the outdoor space of the school there is already a large seaside park,

which includes a Municipal exhibition centre and an indoor athletic centre. The Krafidonas stream flows through the campus.

Transportation from the university to the centre of Volos is quick and easy. The campus is a 15 minute walk from downtown. There is also a reliable bus service and easy accessibility for cars. The centre of Volos, where many students live, is a thriving commercial area with a strong cultural community. The Volos Municipal Regional Theatre with one thousand seats and the largest stage in the Balkans, is a continuation of a long theatrical tradition. The Centre of Music Theatre was founded in 1994, in the context of the National Cultural Network of Cities, and organises an annual international meeting of music theatre. The city is famous for its large number of traditional fish taverns. Together with Mt. Pelion it has become an attractive tourist destination.



4. The Department in the Local and Academic Community

DPRD faculty maintains close contacts with international organisations, national and local authorities as well as with various other local organizations (Development Agencies, Research etc.) The cooperation between these organizations and the department establishes opportunities for practical training for the students and graduates of the department.

The faculty members of DPRD have established strong relations with European and international Institutions. The majority of them have graduated from Universities of the United Kingdom, France, Germany and USA and completed Ph.D. programs in these countries. They keep up with research and applications in their fields, publish in scientific journals and books and maintain personal relationships by inviting speakers or recommending students of DPRD to foreign graduate programs.

The European and international dimension of the DPRD is enriched by the substantial number of invited speakers that give lectures and seminars to students of the undergraduate and postgraduate programs. Moreover, the Department is involved in a series of research programs with broader European and International content, funded by the EU or other foreign Institutions. Most of these programs have an international orientation.

The European and international dimension of the DPRD is further enhanced with the South-East European Development Centre (SEED). SEED is established as an interdisciplinary research and policy analysis centre and intends to contribute to the planning, analysis and evaluation of development policies applied to the less advanced regions of Europe. In this respect, the research teams of SEED aim to approach

the development issues of the region in a multi-national and multi-disciplinary way, presenting reports and policy recommendations to appropriate policy bodies, such as international organizations and governments. DPRD is also a member of the Scientific Committee for the Mediterranean – Balkan postgraduate and doctoral program and co-operates with IAM-Montpellier, Hassan II-Rabat and Université de Caire, under the EU's NECTAR Program.

Finally, the University of Thessaly hosts the 3rd cycle of seminars of Mediterranean-Balkan doctoral program specialized in spatial analysis and applied cartography and the Network of Balkan Demographers (DEMOBALK).

DPRD faculty is in close co-operation with the following institutions:

- Bulgarian Academy of Sciences, Sofia
- National Center for Regional Development and Housing Policy, Sofia
- Georgia Institute of Economy and Management, Sofia
- Institute of Labour, Tirana
- University of Korca, Albania
- University of Tirana
- St. Kyril and Methodious Univeristy, Skopje
- University of Belgrade
- University of Bucharest
- University of Zagreb
- University of Sarajevo



- University of Banja-Luka
- Institute of Social Sciences, Beograd
- Bucharest Institute of Geography
- Katholieke Universiteit Leuven
- Eberhard-Karls University, Tuebingen, Germany
- Observatoire Demographique European, Paris
- Institut National d' Etudes Demographiques, Paris
- Fondation pour le Progres de l' Homme-FPH, Paris
- Institute of Higher Agronomic Studies, Montpellier (IAM)
- Fatih University, Istanbul
- University of Newcastle
- London School of Economics (LSE)
- University of World Economy, Sofia

ERASMUS

The European University Programs of ERASMUS provide another type of co-operation with the European academic community. Students spend a semester abroad and they are partly financed by the EC, the Department and the University through a special scholarship. DPRD

► International Relations Office (IRO-UTH)

🏠 Argonafton & Filellinon, 382 21 Volos (Papastratos Building, University of Thessaly - Seafont Complex, 1st floor, Office No 7)

@ irep@uth.gr

🌐 <http://erasmus.uth.gr/en/>

► Erasmus Student Network (ESN-UTH)

@ uthesn@gmail.com

f <https://www.facebook.com/esnuth/>



is participating since 1997-98 in several of these programs, which involve student and faculty exchange with the following Universities:

► Bulgaria

- University of National and World Economy – www.unwe.acad.bg
- University of Architecture, Civil Engineering & Geodesy- www.uacg.bg

► France

- Université d'Artois – www.univ-artois.fr
- Université d'Avignon et les Pays de Vaucluse – www.univ-avignon.fr
- Université Montesquieu, Bordeaux IV- www.u-bordeaux4.fr
- Université Blaise Pascal, Clermont II – www.univ-bpclermont.fr
- Université de Corse Pascal Paoli – www.univ-corse.fr
- Université du Maine – www.univ-lemans.fr
- Institut Agronomique Méditerranéen de Montpellier – www.iamm.fr
- Université d'Orleans – www.univ-orleans.fr
- Université François Rabelais, Tours – www.univ-tours.fr
- Université de Toulouse I – www.univ-tlse1.fr
- Ecole Nationale Supérieure d'Architecture de Strasbourg – www.strasbourg.archi.fr

► Germany

- Technische Universität Darmstadt – www.tu-darmstadt.de
- Universität Dortmund – www.uni-dortmund.de

► UK

- University College London – www.ucl.ac.uk
- Oxford Brookes University – www.brookes.ac.uk

► Spain

- Universidad Complutense de Madrid – www.ucm.es

► Italy

- Università degli studi di Bari – www.uniba.it
- Università di Catania – www.unict.it
- Università degli studi di Cagliari – www.unica.it

► Netherlands

- Saxion Universities of Applied Sciences – www.saxion.edu
- University of Groningen – www.rug.nl

► Portugal

- Universidade Nova de Lisboa – www.unl.pt

► Turkey

- Ankara University – www.ankara.edu.tr
- Middle East Technical University – www.metu.edu.tr
- Istanbul Technical University – www.itu.edu.tr

5. Administrative Structure

The University was granted its administrative autonomy in 1999 and its first Rector, Professor Pantelis Lazaridis, is a member of the Department. The governing body of the University, the Senate, is comprised of Department chairs, faculty representatives and also includes a number of students and representatives of administrative and technical staff.

The DPRD began operation in 1989 and became independent in October 1996. The administrative body of the department is the General Assembly, which includes both Faculty and students. The Chairperson and the Deputy Chairperson who are elected every two years, and are responsible for the smooth operation of administrative and teaching activities, represent the department. Besides faculty, the Department also employs research personnel as well as administrative and technical personnel. Finally, the Department has established 12 Laboratories providing research facilities in various scientific fields.



■ PRD Building: North-east face

6. Studies – Undergraduate Program

The Department's Curriculum has a duration of ten (10) semesters, and includes mandatory and elective courses that cover the scope of the subject of Spatial Planning and Regional Development.

To obtain the diploma you need:

1. successful attendance of forty-two (42) mandatory courses,
2. successful attendance of ten (10) optional courses,
3. the elaboration of a dissertation, which takes place in two (2) semesters and is worth thirty (30) ECTS credits and
4. a two-month Internship, worth ten (10) ECTS credits, in addition to the required three hundred (300) ECTS credits required for obtaining the diploma.

The learning outcomes

The learning outcomes of the study program of the Department of Spatial Planning and Regional Development are structured on the following axes that constitute the general objectives of the program:

1. A broader understanding of the 'Man-Space' relationship and the overall complexity it entails
2. Development of organized and targeted intervention on the above relationship under different approaches
3. Development of theory and practice in all areas related to the 'Man-Space' relationship in order for the students to acquire the necessary knowledge, skills and abilities.

The above general objectives become specified by the following individual objectives:



■ PRD Building: North-west face

- (a) the development of the ability to investigate and critically analyze the already acquired knowledge, of international level, on the scientific subjects that the Department deals with,
- (b) the development of the ability to interpret the basic parameters of the phenomena of spatial analysis and spatial design, and
- (c) the creation of new theoretical and methodological tools for the promotion of research on issues concerning the economic, socio-political and environmental dimensions of the organization and transformation of space.
- In this context, students acquire the following knowledge, skills and abilities:

KNOWLEDGE	<ul style="list-style-type: none"> • Knowledge on urban planning, spatial planning, physical and human geography, regional development and policy, management of geographical information, positioning of human activities, spatial development planning, management of natural resources, project and programs management, etc. considered necessary for the understanding and solving of spatial problems and the planning and implementation of spatial interventions. • Perception and understanding of both the anthropogenic and natural environment as well as the knowledge that has been developed on issues of spatial analysis. • Scientific analysis and classification of information contained in both the wider environment of the study area as well as the existing, directly relevant and general, literature.
SKILLS	<ul style="list-style-type: none"> • Offering services in the fields of analysis, planning, implementation and evaluation of spatial intervention policies and programs, that include elements of urban and spatial planning, regional development policy and local development policies, economic planning, development policies and decision-making and consultation processes. • Use of cutting edge methodologies and tools for capturing and analyzing all the parameters of the space provided, for example, through geographic information systems, quantitative - econometric methods and decision-making tools. • Development of methodology for dealing with research questions and elaboration of proposals to meet the needs arising from the analysis. • Development, report and presentation of all phases of elaboration of a methodological program in an organized text with sections, schemes and tables with all the elements that substantiate the scientific approach.
ABILITIES	<ul style="list-style-type: none"> • Deep understanding of the operation of the anthropogenic and natural environment and its problems in order to formulate proposals for its optimal efficiency. • Ability to scientifically analyze and organize space from regional scale to the scale of building design. • Development of the ability of documented proposal formulation of spatial planning, regional policy, local and regional development, urban governance and planning.

Mandatory Courses

1st Semester

Courses	Hours	ECTS
Understanding Space – Geography FY0202	4	6
Introduction to Law and Sociology KY0202	4	5
History of Urban Forms PY0107	3	5
Political Economy OY0150	3	5
Statistics MY0202	3	5
Technical Drawing / Autocad TY0202	3	4
Total	20	30

3rd Semester

Courses	Hours	ECTS
Urban Economics AY0306	3	6
Planning Theories ΔY0404	3	6
Transport 1 (Traffic engineering and road design) PY0204	3	6
Environmental Planning and Environmental Policy FY0203	3	6
Geographical Information Systems I TY0505	3	6
Total	15	30

5th Semester

Courses	Hours	ECTS
Rural Space Development AY0503	3	4
Regional Development AY0602	4	6
Spatial Analysis of Urban Settlements PY0101	4	6
Remote sensing TY0701	3	4
Spatial Planning 1 (Analysis at Regional Level) XY0101	3	5
Optional 1	3	5
Total	20	30

2nd Semester

Courses	Hours	ECTS
Ecosystem Analysis and Management FY0205	3	4
Architectural design and structural elements PY0202	4	6
Demography KY0405	3	5
Public Economics, Administration and Institutions OY0401	3	5
Mathematics and Data Analysis MY0204	4	5
Topography – Geodesy TY0205	3	5
Total	20	30

4th Semester

Courses	Hours	ECTS
Urban Design and Landscape Architecture PY0203	4	6
Thematic Cartography TY0502	3	6
Research Methodology KY0702	3	6
Transport 2 (Transportation planning and sustainable urban mobility) PY0205	3	6
Regional Economics AY0405	3	6
Total	16	30

6th Semester

Courses	Hours	ECTS
Planning and Environmental Law KY0405	3	4
Administration and Project Management ΔY0802	3	4
Environmental Assessment FY0204	3	5
Urban Planning and Design PY0102	4	6
Spatial Planning 2 (Synthesis at Regional Level) XY0102	4	6
Optional 2	3	5
Total	20	30

Mandatory Courses

7th Semester			
Courses		Hours	ECTS
Project Appraisal	AY0101	3	4
Real Estate Management	ΠΕ0710	4	5
Town Planning 3 (Structure plans – municipality scale)	ΠΥ0103	4	6
Infrastructure Programming and Planning	XY0506	3	5
Optional 3		3	5
Optional 4		3	5
Total		20	30

9th Semester			
Courses		Hours	ECTS
Policies for Spatial Planning and Development II	XY0104	4	5
Optional 7		3	5
Optional 8		3	5
Optional 9		3	5
Diploma Project A			10
Total		13	30

Total ECTS	
Mandatory courses	240
Optional courses	30
Project/Dissertation	30
Total	300



8th Semester			
Courses		Hours	ECTS
Urban Planning 4: Implementation Acts in Urban Plans	ΠΥ0104	4	6
Policies for Spatial Planning and Development I	AY0102	4	5
Tourism and Leisure Planning	ΠΕ0500	3	4
Spatial Planning 3 (Positioning of Production Activities)	XY0103	3	5
Optional 5		3	5
Optional 6		3	5
Total		20	30

10th Semester			
Courses		Hours	ECTS
Urban Renewal, Regeneration and Development OR	ΠΥ1001	4	5
Integrated Urban Regeneration and Sustainable Development	ΠΥ1002	4	5
Optional 10		3	5
Diploma Project B			20
Total		7	30



Optional Courses

Winter Semester		Group				
Courses		Group				
		E1	E2	E3	E4	E5
Databases	ME1000	□				
Advanced Applications in Remote Sensing	TE0400	■				
Geographical Information Systems II	TE0505	□				
Management of Natural Resources	ΓΕ1000			■		
Planning and Environmental Law II	ΚΕ0405			■	□	■
Spatial approach of Population mobility	ΚΕ0800		□		■	□
Urban Geography	ΓΕ0100				□	□
Place Marketing	ΔΕ0500				□	■
Introduction to Entrepreneurship	ΕΠΕΑΕΚ1				□	□
Special Issues on Spatial Planning	ΧΡ0100		■	□		□
Development Economics	ΟΥ0404				■	
Total		3	2	3	6	6

Spring Semester		Group				
Courses		Group				
		E1	E2	E3	E4	E5
Computer programming	ME0200	■				
Econometrics	OE0300	■				
Geodesy II	TE1000	□				
New Technology and Space	XE0100		■		■	□
Physical and Cultural Heritage and Landscape Management	XE0010			■	□	□
Spatial Dimensions of Demographic Phenomena	ΚΕ0400				□	
Planning and Management of Special Events	ΠΕ1200				□	□
Business Plan Development	ΔΜ1002				□	□
Spatial Development of Border Regions	ΑΡ0100		□	□	□	
Strategic Spatial planning – Geopolitics	ΧΕ1000		■		□	■
Planning and Design of Cities	ΠΕ1100					□
Spatial Governance: Concepts, Institutions, Policies	ΚΕ1300		□	□	□	□
Environmental economics	OE0100			□	□	
Climate Change and Spatial Resilience	ΓΕ1300		□	□		□
Total		3	5	5	9	8

Optional: □ | Chosen mandatorily: ■

E1-Spatial Analysis Methods
 E2-Infrastructure-Transport
 E3-Environment
 E4-Socio-Economic Dimensions of the Space
 E5-Planning and City

7. Postgraduate Program

In the Department of Planning and Regional Development there are postgraduate programs running since the academic year 1998-1999. Currently, there are 6 postgraduate programs:

- Master in Urban Regeneration, Urban Development & Real Estate, http://www.prd.uth.gr/en/m_urudre-courses/
- Master in Advanced Planning Studies, http://www.prd.uth.gr/en/m_sssp-courses/
- Master in Tourism and Cultural Planning and Development, <http://tourismculture-pms.uth.gr/en/>, http://www.prd.uth.gr/en/m_tcpd-courses/
- Master in Project Management, Transportation and Spatial Planning, http://www.prd.uth.gr/en/m_pmtsp-courses/
- Master in Sustainable Management of Environmental Change and Cyclical Economy / Courses, http://www.prd.uth.gr/en/m_smeccce-courses/
- MBA in Strategic Management and Competitiveness, <http://www.ddomo-stratman.econ.uoa.gr/>



ersa

DEMOBALK
Démographie des Balkans



■ Postgraduate Program activities

8. Research

Research Units

Within the Department, there are twelve (12) Laboratories (Research-Units) and two (2) Centers which cover the teaching and research needs of the Department in the respective cognitive subjects. The scientific journal "Aeichoros" is also published, as a culmination of the Department's research orientation in the fields of spatial planning and development in Greece.

► Research Unit of Rural Space

Director: Prof. D. Goussios

The Laboratory of Rural Space covers educational and research needs in the fields of development and planning of regional areas, emphasizing:

- a. In the elaboration of integrated local development and territorial strategies in rural areas on every scale (community, municipality, intramunicipality regional, etc).
- b. In the evolution of the territorial development model, focusing:
 - on the methodology of identification, emergence and enhancement of local territorial resources through adapted action plans with integrated character, which incorporates the local social capital and the diaspora,
 - on the improvement of the role of the local actors in the participated process for the elaboration of a development plan by the diagnosis, until the conformation of actions and their application operational planning,
 - on the organisation of territorial governance and active participation in planning and application of the territorial public action (bottom – up planning of multi-sectoral and multi-funded programs).
- c. The development of small towns in rural areas.
- d. The contribution of new technologies (geo-informatics science) in the creation of spatial analysis tools and construction of specific territorial resources.



■ PRD Building: South-east face

► **Research Unit of Evaluation of Development Policies and Programs (Evaluation Lab)**

Director: Prof. S. Polyzos

The Laboratory for Evaluation of Development Policies and Programs (Evaluation Lab) operates under the auspices of the Department of Planning and Regional Development (DPRD), at the University of Thessaly (U.Th). DPRD offers a well-recognized diploma in the subject of Development covering all development aspects and all spatial levels: from local to regional, from rural to urban space, from national to interregional and international, from infrastructure to labor market, from tourism to innovation, from the public sector to entrepreneurship.

Development Planning and moreover Regional Development Planning has changed targets, content, methods and techniques, in the last fifteen-twenty years. Beyond the convergence of regional economies we are interested in the cohesion of European space; beside balanced development we seek regional competitiveness. Beyond the development of indigenous resources we aim to attract investment and activities from abroad, traditional comparative advantages are not sufficient and we are directed to innovation production and incorporation. In addition to public investment we have in mind private investment and entrepreneurial planning. Furthermore, we are interested in regional development not only in growth periods but also in recession and crisis periods.

► **Research Unit of Geographical Research and Environmental Planning [GREENPLAN]**

Director: Prof. O. Christopoulou

The main objective of this Research Unit is to serve the research and educational needs in the fields of Geography and Environmental Planning and Management.

The research interests of the laboratory staff include Human Geography, Physical Geography, Geography of Developing Countries, Environmental Planning, Water Quality, Coastal Management, Waste Treatment, Environmental Impact Assessment, Ecosystems Analysis. The Unit has been active in participating in research projects concerning Environmental Planning and Management, Geographical Research and Regional Planning and in organizing workshops and conferences focusing on these subjects.

► **Research Unit of Demographic and Social Analysis**

Director: M. Duquenne

The Unit serves the educational needs of the Department at graduate and post-graduate levels on the one hand, and on the other, it carries out basic and applied research in Demography and Urban Sociology. More specifically, within its context, studies and surveys are carried out focusing on the analysis of demographic and social data for the needs of spatial planning and programming.

The study of demographic and social trends (as well as of their impact), at national and regional levels, is one of the basic research activities of the laboratory. Also, in the context of its previous research activities the Unit specializes in the analysis of demographic trends in south-eastern Europe, giving particular



emphasis in the study of minorities and of regional inequalities. DSA, for example, has collected, processed and analyzed data related to the post-war demographic trends in the countries of south-eastern Europe.

► Research Unit of Computer Science Applications in Spatial Planning

Director: Prof. K. Perakis

The Laboratory of Computer Science Applications in Spatial Planning apart from supporting teaching, training and research activities of the Department, it forms the link of targeted IT applications in spatial planning and management. Several research projects both in small and large scales have been elaborated with the use of modern technological tools such as Remote Sensing, Geographic Information Systems and Spatial Data Analysis, from its foundation till today. The laboratory consists of professional and well-trained staff (Professors, researchers, doctoral students and scientific collaborators). The aim of the laboratory of Computer Science Applications in Spatial Planning is through the applied research and the practical problems of the modern society on the natu-

ral and anthropogenic space, to highlight and promote the importance of the applications of Information Technology in Spatial Planning.

► Research Unit of Urban Space Morphology

Director: Prof. A. Gospodini

This Unit carries out research on issues involving Urban Morphology, Urban Design and Planning. More specifically, research focuses on the following topics:

- Urban Redevelopment and Regeneration,
- Urban Renewal and Regeneration of historic centres and heritage urban cores,
- New post-industrial economies
- Urban landscape transformations,
- Globalisation and Place Identity in cities,
- Green Urban Design,
- Sustainable planning and development and spatial Policies for Greek cities.
- Economic crisis and the spatial impacts on Greek cities,
- Planning & Design of Shrinking cities
- New Technologies and Smart cities



■ Student's Projects

► Research Unit of Environment and Spatial Planning [ESPL]

Director: Assistant Prof. M. Chaidarlis

This Unit addresses issues relating to the environmental dimensions of spatial planning, the relationship of environmental policy to urban and regional planning, design and planning for human and natural ecosystems in general, and in particular, such as integrated coastal zone management, integrated river basin management, sustainable tourist development, integrated development of island regions, etc. at a national, Mediterranean and European level.

► Research Unit of Regional Economic Analysis and Policy

Director: Prof. G. Petrakos

This Unit specializes in academic and applied research related to regional problems and regional policies at a sub-national, national and European level. With the use of modern statistical and economic methods and in-site-research, it provides expertise reports to regional and local governments related to future regional prospects, including the projection of vital economic indicators. It focusses on the design of development policies for cities or regions undertaking severe structural adjustments, lagging behind regions, or areas facing serious economic threats from the on-going processes of integration and transition in Europe.

► Research Unit of Tourism Planning, Research and Policy

Director: Prof. A. Deffner

This Unit covers teaching and research needs in topics of tourism planning, development and policy. Among the Unit's issues of concern are included topics of alternative forms of tourism, i.e. agro-tourism, cultural tourism and sustainable development in urban, as well as rural

areas, evaluation of economic and social impacts of tourism on regional development and more specific topics related to spatial issues, planning for infrastructure and services, as well as consultant services.

► Research Unit of Infrastructure, Technology Policy and Development

Director: Prof. P. Skagiannis

The Research Unit's objective is to conduct research, support teaching activities and develop scientific human resources in the fields of telecommunications and Information Society, technology policy, innovation policy and transport (and all infrastructures in general).

RUIPEPOD concentrates mainly on education and research in the fields of analysis, planning, management and evaluation of technical, economic and social infrastructure and technology policy. The role of infrastructures and technology in achieving sustainability at the city or regional level comprises a research interest of special importance for RUIPEPOD. RUIPEPOD maintains a geographical focus in the relevant challenges in Greece and the wider regions of South-Eastern Europe and the Balkans. In the international level, the unit's research activity includes, among others, an ongoing four years partnership with the OMEGA Centre for Mega Projects in Transport and Development (UCL, London) to undertake research on Greek



Mega Transport projects regarding their governance and performance in achieving sustainability and coping with risk and complexity. In the field of entrepreneurship and innovation, RUIEPOD has carried out a number of consulting and research projects and has also created the Unit for Innovation and Entrepreneurship (MOKE) which is responsible for the entrepreneurship education and promotion across the University of Thessaly (<http://moke.uth.gr>).

► Research Unit of Spatial Analysis, GIS and Thematic Mapping

Director: Prof. D. Stathakis

Geographic information science (combining amongst other disciplines spatial analysis, geographical information systems and thematic mapping) can support spatial planning in multiple ways. By quantification and measurement it can contribute to increasing our understanding of the spatial phenomena as well as aid in setting goals and assessing policies. In this context, the objective of the laboratory is to facilitate research, via research programs as well as supporting student thesis, focusing on several specific spatial phenomena. Such examples include the monitoring and forecasting of urban sprawl, the establishment and measurement of metrics (urban and regional planning metrics) and also the monitoring and forecasting of land use changes.

► Research Unit of Urban and Spatial Planning

Director: Assoc. Prof. Ch. Kousidonis

The Research Unit of Urban and Spatial Planning covers teaching and research needs in the general fields of regional and urban planning, as well as in the more specific subjects of the analysis and evaluation of spatial politics, the connection of spatial planning with developmental and environmental planning and management, the dealing with issues connected to the main urban planning functions – and specifically housing, work, leisure (tourism, culture, sport) and transportation – urban design, urban regeneration, and the application of geographic information systems in spatial planning.

The Unit focused especially, over the last few years, on urban regeneration in metropolitan areas, strategic spatial policy (institutions and legislation), and localization of renewable resource energy units.

Activities (in brief):

1. Strategic urban planning and policy research
2. Urban regeneration research
3. Metropolitan planning and policy research
4. Strategic national/regional spatial planning and policies research
5. Productive activities location research
6. Programme evaluation research



■ PRD Building: Atrium

Research Centers

► Southern and Eastern European Development Center (SEED)

Director: Professor G. Petrakos

The purpose of the Center is to analyze and evaluate policies for the development of Southern and Eastern Europe and in particular the Balkans. These policies may concern a number of spatial levels (eg groups of countries, cross-border zones, industrial decline regions, rural regions), and intervention areas (eg restructuring, stabilization, integration, infrastructure and development policies). The developmental and structural backwardness of the Balkans, and the lack of potential for economic fulfillment and integration of the region, did not receive the appropriate applied scientific analysis. This gap is being filled by SEED by utilizing the specialized knowledge of its research potential to solve specific problems. The research teams of the center aim at the international and interdisciplinary approach and the formulation of specific policy proposals. Particular emphasis is placed on disseminating the results of the Center's research work to decision-makers and the public, as well as actively participating - where necessary - in planning and implementing the proposed policies. SEED is scientifically and administratively supported by the Laboratories of the Department, as well as by experts from other Departments of the University of Thessaly.

► Research – Informations System Center (ISC)

Director: Prof. K. Perakis

The Informations Systems Center (ISC) supports the undergraduate and post-graduate studies of the PRD-UTH as well as the research activities of the teaching staff in all individual subjects of the curriculum.

► "Aeichoros" Magazine

The constant pursuit of the Department of Planning and Regional Development of the University of Thessaly is substantial contribution to the promotion and exchange of scientific thought and research in the modern issues of spatial planning and development in Greece. To this end, the human resources of the Department offer all their strength and remain open to cooperation.

The aim of the journal is to strengthen critical thinking and promote scientific dialogue in spatial planning (urban composition, urban planning, spatial planning) and development (local and regional), and in related scientific fields that support planning in various ways (eg. geography), as well as to present modern Greek research.

It also publishes texts on policy issues, critical comments on conferences, interviews with foreign and Greek scientists, thematic reviews, as well as reviews / presentations on relevant books, audiovisual products / services of new technologies (movies, TV shows, videocassettes, DVDs, CD-ROMs, web pages, etc.). Articles are judged by two anonymous judges (the process is done electronically through the magazine's website) and the rest of the texts are judged by the Editorial Board.



9. Staff

Faculty Members



Aristidis (Aris) Sapounakis
 Professor: Architectural and Urban Design
Chairman of PRDept-UTH
 🏠 Γ14 📞 24210 74477 📠 24210 74380
 @sapounakis@prd.uth.gr



Aspa Gospodini
 Professor: Urban Planning & Design
Director of PostGraduate Program of Studies URUDRE
 🏠 Γ33 📞 24210 74429 📠 24210 74380
 @gospod@prd.uth.gr



Dimitrios Goussios
 Professor: Planning of the Rural Areas
 🏠 Γ31 📞 24210 74464 📠 24210 74380
 @goussios@prd.uth.gr



Alexios Deffner
 Professor: Urban and Leisure Planning
Director of PostGraduate Program of Studies TCPD
 🏠 Γ11 📞 24210 74428 📠 24210 74381
 @adeffner@prd.uth.gr



Konstantinos Lalenis
 Professor: Urban Planning and Urban Governance
 🏠 Γ27 📞 24210 74425 📠 24210 74395
 @klalenis@prd.uth.gr



Nicholas Batis
 Professor: Information Systems
 🏠 Γ21 📞 24210 74451
 @batis@uth.gr



Marie-Noelle Duquenne
 Professor: Statistical and Econometric Methods of Spatial Analysis
 🏠 Γ6 📞 24210 74438 📠 24210 74380
 @mdyken@prd.uth.gr



Konstantinos Perakis
 Professor: Remote Sensing and Statistical Applications
 🏠 Γ32 📞 24210 74465 📠 24210 74380
 @perakis@prd.uth.gr



George Petrakos
 Professor: Spatial Economic Analysis
 🏠 Γ10 📞 24210 74468 📠 24210 74385
 @petrakos@prd.uth.gr



Serafim Polyzos
 Professor: Urban and Regional Development
 🏠 Γ28 📞 24210 74446 📠 24210 74380
 @spolyzos@prd.uth.gr



Pantoleon (Pantelis) Skayannis
 Professor: Infrastructure Policy
Director of PostGraduate Program of Studies APS
 🏠 Γ12 📞 24210 74469 📠 24210 74389
 @leonska@prd.uth.gr



Dimitris Stathakis
 Professor: Urban and Spatial Planning using GIS and Remote Sensing
 🏠 Γ34 📞 24210 74489 📠 24210 74380
 @dstalh@prd.uth.gr



Olga Christopoulou
 Professor: Development and Protection of Rural and Mountain Areas
Director of PostGraduate Program of Studies SMECCE
 🏠 Γ9 📞 24210 74417 📠 24210 74276
 @ochris@prd.uth.gr



Dimitrios Kallioras
 Associate Professor: Economic and Regional Development
 🏠 Γ8 📞 24210 74484 📠 24210 74385
 @dkallior@prd.uth.gr



Christos Kousidoni
 Associate Professor: Urban and Spatial Planning
 🏠 Γ7 📞 24210 74437 📠 24210 74380
 @kousidon@prd.uth.gr



Evangelos Asprogerakas
 Assistant Professor: Spatial planning
 🏠 Γ28 📞 24210 74480
 @asprogerakas@uth.gr



Nikolaos Gavanas
 Assistant Professor: Transportation Planning and Transportations Technique
 🏠 📞
 @gavanas@uth.gr



Anestis Gourgiotis
 Assistant Professor: Spatial Planning
 🏠 Γ26 📞 24210 74475
 @gourgiotis@uth.gr



Nikolaos Triantafyllopoulos
 Assistant Professor: Real estate management
 🏠 Γ24 📞 24210 74474 📠 24210 74380
 @ntriant@uth.gr



Marios Haidarlis
 Assistant Professor: Legislation of Spatial Planning and Environment
 🏠 Γ25 📞 24210 74415 📠 24210 74398
 @marioshaidarlis@uth.gr



Nikolaos Samaras
 Lecturer: Reconstruction and Revival of Historic Centers and Complexes
 🏠 📞
 @nxsamaras@uth.gr

► Emeritus faculty members



Harry Kokkosis
 Emeritus faculty member: Urban, Spatial and Environmental Planning
 🏠 Γ30 📞 24210 74449 📠 24210 74276
 @hkok@prd.uth.gr



Elias Beriatos
 Emeritus faculty member: Spatial Planning and Geography
 🏠 Γ30 📞 24210 74449 📠 24210 74276
 @beriatos@prd.uth.gr



Dimitrios Economou
 Emeritus faculty member: Spatial planning
 🏠 Γ30 📞 24210 74449 📠 24210 74276
 @deconom@prd.uth.gr

Research and Technical Staff

► Laboratory Teaching Staff



Dimitra Gaki

Laboratory Teaching Staff: PhD Spatial Planning, MSc Rural Development and Projects

📍 B13 📞 24210 74463 📠 24210 74383
@dimgaki@prd.uth.gr



Anna Zygoura

Laboratory Teaching Staff: MSc Physicist

📍 B08 📞 24210 74470
@azygoura@prd.uth.gr



Katerina Kaisari

Laboratory Teaching Staff: MSc Aquatic Resource Management, Hydrobiologist

📍 B10 📞 24210 74459
@kaisari@prd.uth.gr



Panayiotis Manetos

Laboratory Teaching Staff: PhD Agronomist -Landscape Engineer

📍 B4 📞 24210 74467
@pmanelos@uth.gr



Prodromos Mardakis

Laboratory Teaching Staff: PhD Urban and Regional Planner

📍 B13 📞 24210 74463 📠 24210 74383
@pmard@prd.uth.gr



Panayiotis Pantazis

Laboratory Teaching Staff: PhD Candidate, MSc Urban and Regional Planner

📍 B6 📞 24210 74487 📠 24210 74398
@ppantaz@prd.uth.gr



Petros Rodakinias

Laboratory Teaching Staff: MSc Urban and Regional Planner

📍 B08 📞 24210 74476
@prod@prd.uth.gr



Anna Samarina

Laboratory Teaching Staff: PhD Candidate, MSc Urban and Regional Planner

📍 Γ15 📞 24210 74456
@asamarina@prd.uth.gr



Yannis Saratsis

Laboratory Teaching Staff: PhD Urban and Regional Planner

📍 B5 📞 24210 74462
@saratsis@prd.uth.gr



Anastasia Trampa

Laboratory Teaching Staff: PhD Candidate, MSc Urban and Regional Planner

📍 B7 📞 24210 74423 📠 24210 74390
@atrampa@prd.uth.gr



Maria Tsiapa

Laboratory Teaching Staff: PhD Urban and Regional Planner

📍 B4 📞 24210 74467 📠 24210 74385
@mtsiapa@prd.uth.gr



Eva Psatha

Laboratory Teaching Staff: PhD Urban and Regional Planner, Civil Engineer

📍 B3 📞 24210 74494
@epsatha@prd.uth.gr

► Specific Technical Research Staff and Research Laboratory Staff



Marianthi Spyreli

Specific Technical Research Staff: Mathematician

📍 B10 📞 24210 74493
@mspyreli@prd.uth.gr



Nikolaos Gitsakis

Research Laboratory Staff: MSc Agricultural Hydraulics

📍 B15 📞 24210 74471
@gitsakis@uth.gr



Nikolaos Kromidakis

Research Laboratory Staff: Urban and Regional Planner

📍 B09 📞 24210 74432
@nkrom@prd.uth.gr

Administrative Staff



Isidoros Pappas

Department Secretary: PhD Candidate, MSc Urban and Regional Planner

📍 A9y 📞 24210 74455 📠 24210 7480
@ipapas@prd.uth.gr



Kostas Patsis

Administrative Staff: Urban and Regional Planner

📍 A9α 📞 24210 74431 📠 24210 7480
@kpatsis@uth.gr



Sophia Skopeliti

Administrative Staff: Political Scientist

📍 A9α 📞 24210 74453 📠 24210 7480
@skopeliti@prd.uth.gr



Stavroula Vafiadou

Postgraduate Programs Administrative Staff: Economist

📍 A8 📞 24210 74444 📠 24210 74384
@stvafiada@prd.uth.gr



Evi Dragoidou

Chairman Secretary: Business Management Studies

📍 Γ19 📞 24210 74488
@edragoid@prd.uth.gr



Evi Kolovou

Librarian

📍 Γ2 📞 24210 74486
@libprd@prd.uth.gr



Yannis Moutsios

Information System Center Technical Support: Electronic engineer

📍 A4 📞 24210 74448 📠 24210 74375
@moutsios@uth.gr



Antonis Soulikias

Information System Center Technical Support: MSc Informatic Systems, Physicist

📍 A4 📞 24210 74443 📠 24210 74375
@asoulikias@uth.gr



Πανεπιστημιακές
Εκδόσεις Θεσσαλίας

